



OPEN

Analysis of body condition indices reveals different ecotypes of the Antillean manatee

D. N. Castelblanco-Martínez^{1,2,3✉}, D. H. Slone⁴, S. S. Landeo-Yauri³, E. A. Ramos³, A. Alvarez-Alemán^{5,6}, F. L. N. Attademo⁷, C. A. Beck^{4,5}, R. K. Bonde⁵, S. M. Butler⁴, L. J. Cabrias-Contreras⁸, D. Caicedo-Herrera⁹, J. Galves⁵, I. V. Gómez-Camelo⁹, D. González-Socoloske¹⁰, D. Jiménez-Domínguez¹¹, F. O. Luna⁷, Y. Mona-Sanabria⁹, J. B. Morales-Vela¹², L. D. Olivera-Gómez¹¹, J. A. Padilla-Saldivar¹², J. Powell⁵, J. P. Reid⁴, G. Rieucou^{3,13} & A. A. Mignucci-Giannoni^{8,14}

Assessing the body condition of wild animals is necessary to monitor the health of the population and is critical to defining a framework for conservation actions. Body condition indices (BCIs) are a non-invasive and relatively simple means to assess the health of individual animals, useful for addressing a wide variety of ecological, behavioral, and management questions. The Antillean manatee (*Trichechus manatus manatus*) is an endangered subspecies of the West Indian manatee, facing a wide variety of threats from mostly human-related origins. Our objective was to define specific BCIs for the subspecies that, coupled with additional health, genetic and demographic information, can be valuable to guide management decisions. Biometric measurements of 380 wild Antillean manatees captured in seven different locations within their range of distribution were obtained. From this information, we developed three BCIs ($BCI_1 = UG/SL$, $BCI_2 = W/SL^3$, $BCI_3 = W/(SL * UG^2)$). Linear models and two-way ANCOVA tests showed significant differences of the BCIs among sexes and locations. Although our three BCIs are suitable for Antillean manatees, BCI_1 is more practical as it does not require information about weight, which can be a metric logistically difficult to collect under particular circumstances. BCI_1 was significantly different among environments, revealing that the phenotypic plasticity of the subspecies have originated at least two ecotypes—coastal marine and riverine—of Antillean manatees.

The nutritional status of wild animals is an important factor defining individual survival, influencing growing rates, reproductive frequency and fecundity¹, and has population-level consequences². Seasonal and spatial variation in body condition—a key variable to infer energetic reserves—provides insight into animal foraging success over time and space, and enables inferences regarding aspects of the ecosystem's health and of the population's resilience³. Developing reliable, non-invasive means to assess body condition is important to clarify many life-history and ecological characteristics of wild populations, as well as to guide decisions for successful management in captivity.

Condition indices are defined as biochemical, physiological, or morphological metrics used to define the health of individuals and are assumed to be related to foraging success and ultimately fitness⁴. Thus, they can be a simple and sensible tool to detect differences among ill and healthy individuals⁵. Some of these condition indices are based on the measurement of biological macromolecules including lipids, nucleic acids, and proteins⁶; or physiological parameters such as plasma-lipid metabolites, hormone levels, and hematological levels⁷. Another

¹Consejo Nacional de Ciencia y Tecnología, Mexico city, Mexico. ²Universidad de Quintana Roo, Chetumal, Mexico. ³Fundación Internacional Para la Naturaleza y la Sustentabilidad, Chetumal, Mexico. ⁴U.S. Geological Survey, Sirenia Project, Wetland and Aquatic Research Center, Gainesville, USA. ⁵Clearwater Marine Aquarium Research Institute, Clearwater, USA. ⁶Centro de Investigaciones Marinas, Universidad de la Habana, Havana, Cuba. ⁷Instituto Chico Mendes de Conservação da Biodiversidade/Centro Nacional de Pesquisa e Conservação de Mamíferos Aquáticos, Pernambuco, Brazil. ⁸Caribbean Manatee Conservation Center, Inter American University of Puerto Rico, Bayamon, Puerto Rico. ⁹Fundación Omacha, Bogotá, Colombia. ¹⁰Andrews University, Berrien Springs, USA. ¹¹Universidad Juárez Autónoma de Tabasco, Villahermosa, Mexico. ¹²El Colegio de La Frontera Sur, Chetumal, Mexico. ¹³Louisiana Universities Marine Consortium, Chauvin, USA. ¹⁴Center for Conservation Medicine and Ecosystem Health, Ross University School of Veterinary Medicine, Basseterre, Saint Kitts and Nevis. ✉email: castelblanco.nataly@gmail.com

group of indices are biometric in nature⁸ and are used as a proxy for energy reserves, nutrient reserves, or mass of body fat^{9,10}. According to the method to obtain them, BCIs generally fall into two categories: ratio indices (*i.e.*, ratio of body mass divided by body length) and residual indices (*i.e.*, residuals from regression of body mass on body length)⁹.

The evaluation of BCIs have been applied to a broad array of questions in monitoring long-term effects including: to assess the fluctuation of availability of feeding resources¹¹; to explore the impact of parasitic and infectious diseases on individual health^{12,13}; to evaluate the consequences of metal bioaccumulation¹⁴, organic pollutants¹⁵, and habitat fragmentation¹⁶; and to infer reproductive state in females¹⁰ and males¹⁷. BCIs have been developed for several marine mammals including polar bears *Ursus maritimus*¹⁸, Pacific walrus *Odobenus rosmarus divergens*¹⁹, fur seals *Callorhinus ursinus*²⁰, Steller sea lions *Eumetopias jubatus*²¹, cetaceans³, dugongs *Dugong dugon*¹⁷, and Florida manatees *Trichechus manatus latirostris*²².

Manatees (Trichechidae) are herbivorous, fully aquatic mammals of the order Sirenia and include three extant species: the Amazonian manatee *Trichechus inunguis*, the African manatee *T. senegalensis*, and the West Indian manatee *T. manatus*. The two recognized subspecies of the West Indian manatee are the Florida manatee *T. m. latirostris* and the Antillean manatee *T. m. manatus*, the latter distributed in the Gulf of Mexico, the Caribbean, and Atlantic Ocean from northern Mexico (Tamaulipas State) to the northeastern coast of Brazil (Alagoas State), including the Greater Antilles. Across its range of distribution, the subspecies faces a number of human-related threats including poaching, entanglement in fishing nets, boat collisions, and habitat fragmentation or loss²³. Because of this, coupled with slow reproductive and population growth rates, the Antillean manatee is considered endangered by the IUCN, and protected by local laws in almost every country of its distribution²⁴. The subspecies inhabits many diverse marine, estuarine, and riverine habitats²⁵, moving and behaving differently depending on the environment. Despite the wide distribution and plasticity of Antillean manatees to adapt to different habitats, little genetic, morphological, or physiological evidence currently supports the distinctiveness of 'ecotypes' (*e.g.* several expressions of the same population resulting from local adaptation to heterogeneous environmental conditions²⁶).

Harshaw et al. (2016) determined a normal range of biometric BCIs for Florida manatees, and explored differences in manatee body condition between geographic areas. The authors suggested that these indices can be useful for monitoring manatees in captivity, and to also serve as baseline for the wild Florida manatee population. However, those indices are likely unsuitable in studies of Antillean manatees because *T. m. latirostris* has a larger, stockier body shape than *T. m. manatus*²⁷, and the growth rate between the subspecies differs²⁸. Here, we analyze three morphometric body condition indices for Antillean manatees from several areas of the subspecies' distribution, after the indices found in Harshaw et al. (2016). We compare the results of the three BCIs across geographic location, sex, and habitat type to identify differences and similarities.

Methods

Biometric data of wild Antillean manatees were obtained from individuals captured during long-term projects conducted in different regions of the subspecies' distribution, or during procedures of rescue and relocation. The field procedures were performed in accordance with international and national guidelines and regulations, following rigorous ethical standards to ensure the welfare of study manatees and the protection of their habitats. All the proposed protocols for manatee capture, restriction, measurement, and sample collection were evaluated and approved by special licensing committees of each of the following entities: CITMA (Ministerio de Ciencia Tecnología y Medio Ambiente, Cuba), USFWS (U.S. Fish and Wildlife Service, Puerto Rico and Guantanamo in Cuba), SEMARNAT (Secretaría de Medio Ambiente y Recursos Naturales, Mexico), BDF (Belize Department of Forestry, Belize), MMADS (Ministerio de Medio Ambiente y Desarrollo Sostenible, Colombia), and SISBIO (Sistema de Autorização e Informação em Biodiversidade, Brazil). The captures were conducted under research permits issued by the local environmental authority of each country (See Acknowledgment section for permit details).

These projects focused on the condition of manatees and involved health assessments and very often satellite telemetry monitoring. Information about each manatee's individual identification, date, location, sex, and collector were also included in the database. Maps of the study locations and that of each captured wild manatee were created in QGIS 3.14²⁹. Straight-line body length (SL) was measured from the tip of the snout in a relaxed position to the median notch of the tail, and the body circumference was measured at the level of the umbilical scar (umbilical girth, UG) (Fig. 1). Where possible each manatee was weighed using a stretcher suspended from a crane scale³⁰. Manatee age classes were classified as calves (<175 cm), subadults (175–225 cm), or adults (>225 cm)³¹.

We standardized a qualitative scale of body appearance for each manatee (field score) in order to discard from the analysis any individual with evident abnormal health status, and all suspected pregnant females. The standardization was based on the visual assessment of manatee bodies at the moment of biometric data collection, the animal's condition was categorized as emaciated (C1), thin (C2), ideal (C3), overweight (C4), or obese (C5) (Supplementary material 1 and 2). Some manatees were graded using a simplified scale that combined C1-2 and C4-5 field scores, so data from the first two groups (C1, C2) and data from the last two groups (C4, C5) were combined to analyze whether field score was significantly correlated with BCI. These groupings were not used for the final BCI analysis. Animals that were not visually scored were not included in the field score analysis, but were included in the final BCI analysis. Since body morphometrics are influenced by gestational stage¹⁷, females at the last stage of pregnancy were also excluded. Of the large number of measurements taken during manatee health assessments, we only used data on body mass (W), umbilical girth (UG), and straight-line total length (SL) for these analyses. The first BCI (Eq. 1) represents the expected proportionality among umbilical girth (UG) and straight-line total length (SL), assuming a geometric similarity ($b = 1$)²²:

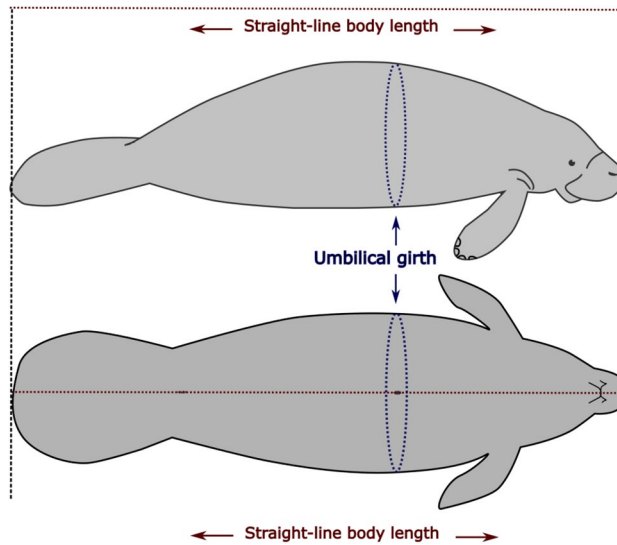


Figure 1. Illustration of straight-line total length (SL) and umbilical girth (UG) measured in wild and captive Antillean manatees.

$$BCI_1 = \frac{UG}{SL^{b_1}} \quad (1)$$

Geometric similarity among all animal sizes, that is larger animals having the same relative shape as smaller animals, would result in $b_1 = 1$. If longer animals have a proportionately larger girth, $b_1 > 1$, and $b_1 < 1$ for the opposite relationship. Higher BCI_1 values indicate a population with proportionately larger girths.

The allometric relationship between the weight (W) and the SL of a manatee is the second BCI (Eq. 2), expressed as:

$$BCI_2 = \frac{W}{SL^{b_2}} \quad (2)$$

If the weight of manatees is proportional among all sizes, $b_2 = 3$. If longer animals have a proportionately higher weight, $b_2 > 3$, and $b_2 < 3$ for the opposite relationship. Here, higher BCI_2 values indicate a population of proportionately heavier weight at a given SL.

The final BCI represents the allometric relationship among all three measurements, measuring the ratio of W to the two measured dimensions SL and UG (Eq. 3 $BCI_3 = \frac{W}{SL^{b_1} \times UG^{b_3}}$):

$$BCI_3 = \frac{W}{SL \times UG^{b_3}} \quad (3)$$

Here, geometrically similar animals would result in $b_3 = 2$. If animals with a given SL and UG have a proportionately higher weight, $b_3 > 2$, and $b_3 < 2$ for the opposite relationship. Therefore, higher BCI_3 scores indicate a population of heavier weight individuals at a given SL and UG. With all three measurements being incorporated, BCI_3 has the potential to be more accurate than the other types, but it also may mask morphological differences among populations because animals that are long and thin may have a similar BCI_3 as animals that are shorter and stouter.

Initial data exploration suggested that outlier data points were present, so all analyses were performed with robust models in R^{32,33}. First, each BCI formula was fit to the available data to determine the overall BCI and b coefficient using the nonlinear model function *nprob* (package *robustbase*³⁴). To test for geometric similarity among different sizes of manatees, the following reformulations of Eqs. (1)–(3) were fit: for BCI_1 :

$$UG = BCI_1 \times SL^{(1-b_1)} \quad (4)$$

for BCI_2 :

$$W = BCI_2 \times SL^{(3-b_2)} \quad (5)$$

and for BCI_3 :

$$W = BCI_3 \times SL \times UG^{(2-b_3)}. \quad (6)$$

Two of the factors (Habitat and Sex) were also included in a non-linear robust model for each of the BCI equations to determine their effect on BCI and b . For example, the BCI_1 equation was:

Country	Females	Males	Adults	Subadults	Calves	Total
Puerto Rico	19	18	25	8	4	37
Cuba	11	11	14	2	6	22
Mexico G	16	12	10	12	6	28
Mexico C	12	20	16	10	6	32
Belize	79	81	92	48	20	160
Colombia	36	36	14	34	24	72
Brazil	4	7	5	6	–	11
Total	177	185	176	120	66	362

Table 1. Details on sex and age class of wild Antillean manatees captured for health assessments or rescues in seven locations throughout their range. Mexico C = Mexican Caribbean, Mexico G = Southern Gulf of Mexico.

$$UG = (BCI_1 + r_1 \times Riverine + m_1 \times Male) \times SL^{(b_1 + br_1 \times Riverine + bm_1 \times Male)}. \quad (7)$$

The b parameters that were fit in Eqs. (4)–(6) were incorporated into Eqs. (1)–(3) to calculate each BCI for each manatee. This removed the non-linear component and allowed us to fit each BCI in linear robust models using function *lmrob* (package *robustbase*) with settings = "KS2014"³⁵ to estimate the effect of the factor variables, including Country (Mexico was split into Chetumal Bay and Gulf Coast locations), habitat type (Marine or Riverine), sex (F, M), and field condition rating (C1–2, C3, or C4–5). For the latter test the thin and obese animal data were re-incorporated into the data set. These models were of the form:

$$BCI = a + c \times Country + h \times Habitat + s \times Sex + f \times FieldCondition \quad (8)$$

Data visualization was performed with the package *ggplot2*³⁶.

Results

Records were obtained from 416 wild Antillean manatees, of which 380 had data for body mass (W), umbilical girth (UG), and/or straight-line total length (SL). Of these, 362 individuals had good (C3) or unscored body condition (182 females, 184 males), which were assumed to have a healthy appearance. The manatees were captured or rescued between 1978 to 2019 in Puerto Rico ($n = 37$), Cuba ($n = 22$), Mexico (southern Gulf of Mexico, Mexico G: $n = 28$; Mexican Caribbean, Mexico C: $n = 32$), Belize ($n = 160$), Colombia ($n = 72$), and Brazil ($n = 11$) (Table 1, Fig. 2). The remaining individuals were scored emaciated or thin, hereafter termed “thin” (C1 or C2; $n = 5$); or overweight or obese, hereafter termed “obese” (C4 or C5; $n = 13$) and were not used in the analyses except for those that specifically included a field-scored body condition. Not all measurements were made on every manatee, and as a result, sample sizes differed for each body condition index. There were 353 manatees with UG and SL measurements (BCI_1), 234 with W and SL (BCI_2), and 225 with all three measurements (BCI_3).

Initial estimates of BCI by country showed a strong grouping by the predominant habitat type used by manatees in each location. Countries where manatees were captured predominately in coastal, marine, bay/lagoon, and estuarine habitats (Puerto Rico, Cuba, Mexico C, Belize, Brazil) had very similar values, and countries where manatees were captured in riverine habitats (Colombia, Mexico G) were also similar (Table 2). Including country and habitat types as factors in the *nlob* model showed that country and type of coastal habitat were not significant factors, but coastal vs. riverine habitat was very significant. Therefore we incorporated this into the final models.

All b values were smaller than the corresponding geometric similarity values, indicating that longer manatees were proportionally thinner than shorter manatees (Table 3). This was especially apparent in b_1 , which was 7% smaller in females and 15% smaller in males, and b_2 , which was 12% smaller in females and 15% smaller in males. The b_3 estimate was 6% smaller in both males and females, but was not significant. For this reason, the b parameter was fitted in each model rather than use the theoretical values for geometric similarity. The b values for the Riverine manatees were not significantly different from those of the Coastal manatees.

The BCI values for Male vs. Female manatees did not differ significantly, but the BCI_1 and BCI_2 of Coastal manatees were both larger than those of the Riverine animals, indicating an overall larger girth and higher weight for a given body length (Table 3). Both BCI_1 and BCI_2 showed a strong effect from Habitat, and a weak, inconsistent effect from Sex. Animals from the Riverine habitat found in Colombia and Mexico G were consistently thinner and lighter than their Coastal counterparts, even those from nearby countries. Conversely, the BCI_3 and b_3 values were very consistent across Habitat and Sex. By incorporating girth and length, this measure was robust to environmental and genetic heterogeneity and provided the most accurate size to weight relationship (Figs. 3, 4). Including the thin (C1 and C2) and obese (C4 and C5) animals into the models showed that all BCI measurements were significantly different for the thin animals, but only BCI_1 was significantly different in the obese animals (Table 4). It is notable that most of the manatees that were field-classified as emaciated/thin, and all of the manatees classified as obese were well within the minimum and maximum values for the “normal” weight manatees (i.e. C3), even after accounting for Sex and Habitat (Fig. 5).

All the BCIs for males from both habitat types obtained in this study were on average smaller than those obtained from Florida manatees (Table 5)²². All of the Female BCIs from the Riverine habitat type were on average smaller than those from Florida, but the Antillean manatee BCI_1 and BCI_2 from the Coastal habitat were larger.

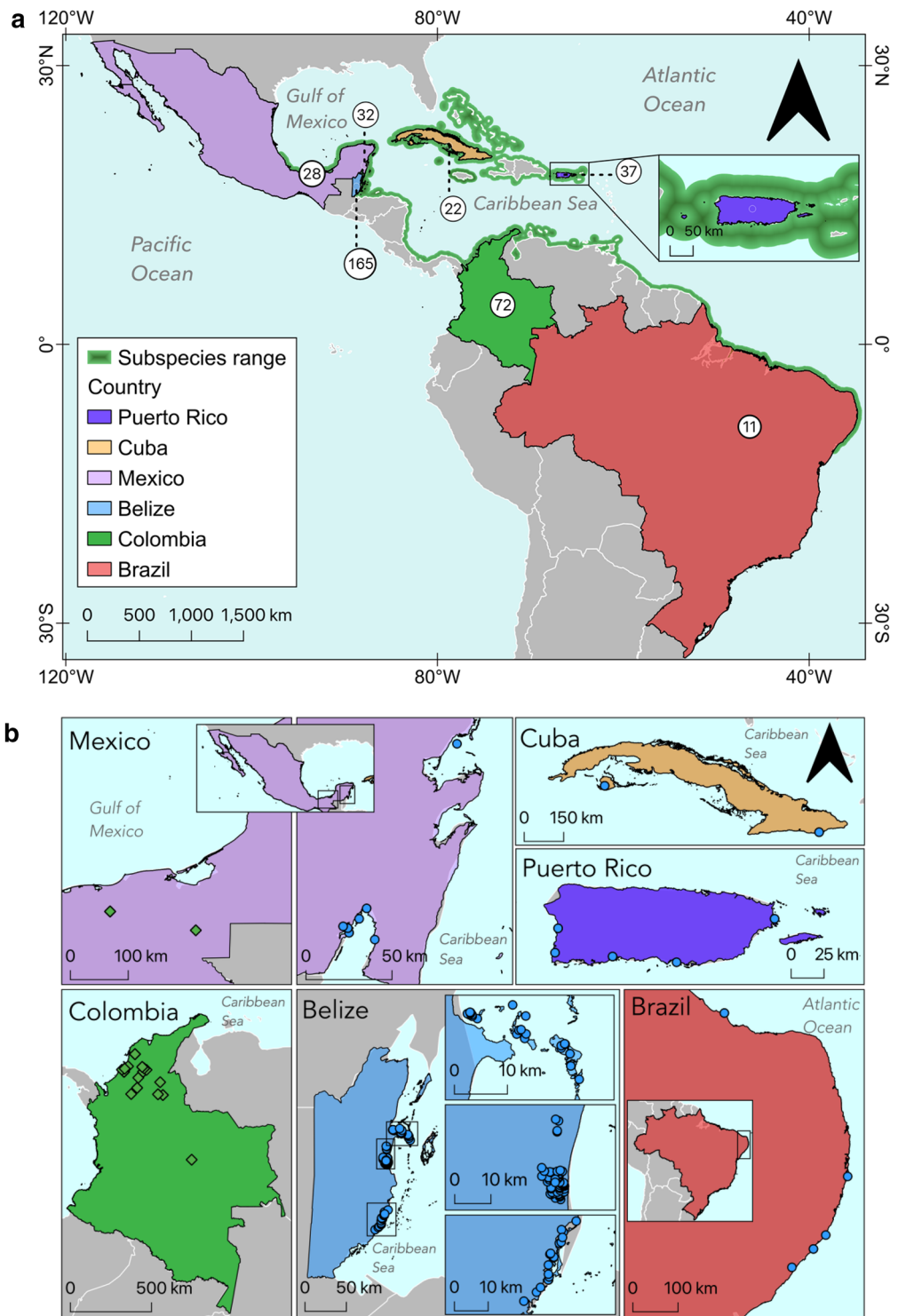


Figure 2. (a). Map of the countries where samples of Antillean manatees were collected overlaid with a map of their distribution²⁴ with number of individuals shown in circles. (b). Specific locations of manatee captures. Manatees were captured in coastal marine (blue circles) and riverine (green diamonds) environments.

Discussion

The development of efficient tools to appraise the body condition of manatees is necessary to advise monitoring and management actions to protect manatee populations. In this study, we developed and compared three morphometric body condition indices for Antillean manatees. Our results demonstrate that our three BCIs are suitable for the subspecies, with BCI_1 (umbilical girth/body length) being easier to fit as it does not require measuring body weight, which can be challenging to collect in the field. It was also the most sensitive to Habitat

Habitat	Country	BCI ₁		BCI ₂		BCI ₃	
		Mean	SE	Mean	SE	Mean	SE
Riverine	Colombia	0.686	0.006	19.550	0.394	36.003	0.518
	Mexico G	0.695	0.009	22.032	0.557	38.186	0.717
Coastal marine	Belize	0.755	0.004	25.166	0.302	38.438	0.366
	Brazil	0.760	0.014	26.373	1.265	39.743	1.431
	Cuba	0.750	0.010	–	–	–	–
	Mexico C	0.758	0.008	23.571	0.526	35.901	0.633
	Puerto Rico	0.763	0.008	24.713	0.807	37.991	1.091

Table 2. BCI values fitted to wild Antillean manatees with non-linear robust regression by country of capture.

Parameter	Mean	SE	t value	Pr(> t)
BCI ₁ (Female, Coastal)	0.765	0.025	–	–
BCI ₁ (Male, Coastal)	0.801	0.026	–	–
BCI ₁ (Female–Male)	–0.036	0.030	–1.201	0.2304
BCI ₁ (Coastal–Riverine)	0.078	0.034	2.288	0.0227*
1-b ₁ (Female, Coastal)	0.074	0.035	2.107	0.0358*
1-b ₁ (Male, Coastal)	0.154	0.035	4.378	<0.0001***
b ₁ (Female–Male)	0.080	0.042	1.887	0.0599
b ₁ (Coastal–Riverine)	–0.007	0.053	–0.141	0.8881
BCI ₂ (Female, Coastal)	25.043	2.303	–	–
BCI ₂ (Male, Coastal)	25.963	2.309	–	–
BCI ₂ (Female–Male)	–0.920	1.676	–0.549	0.5837
BCI ₂ (Coastal–Riverine)	8.385	2.874	2.918	0.0039**
3-b ₂ (Female, Coastal)	0.374	0.093	4.016	<0.0001***
3-b ₂ (Male, Coastal)	0.439	0.092	4.784	<0.0001***
b ₂ (Female–Male)	0.065	0.074	0.877	0.3814
b ₂ (Coastal–Riverine)	–0.277	0.143	–1.944	0.0532
BCI ₃ (Female, Coastal)	37.600	2.125	–	–
BCI ₃ (Male, Coastal)	37.965	2.292	–	–
BCI ₃ (Female–Male)	–0.365	2.539	–0.144	0.8859
BCI ₃ (Coastal–Riverine)	1.668	2.738	0.609	0.5431
2-b ₃ (Female, Coastal)	0.112	0.087	1.277	0.2029
2-b ₃ (Male, Coastal)	0.117	0.098	1.190	0.2353
b ₃ (Female–Male)	0.005	0.110	0.050	0.9603
b ₃ (Coastal–Riverine)	–0.113	0.131	–0.860	0.3905

Table 3. BCI and *b* values fitted to wild Antillean manatees with non-linear robust regression. (* = *p* < 0.05; ** = *p* < 0.005; *** = *p* < 0.0005).

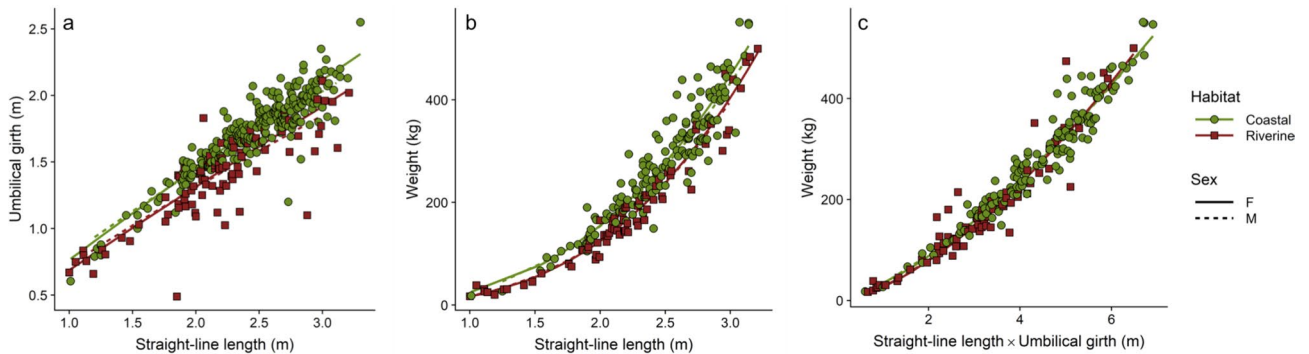


Figure 3. Relationships between: (a) Umbilical Girth (UG) and Straight-line length (SL) (*n* = 353); (b) Weight (W) and Straight-line length (SL) (*n* = 234); and (c) Weight (W) and Straight-line length (SL) X Umbilical girth (UG) (*n* = 225), from two habitat types. Lines indicate fit from a nonlinear robust regression.

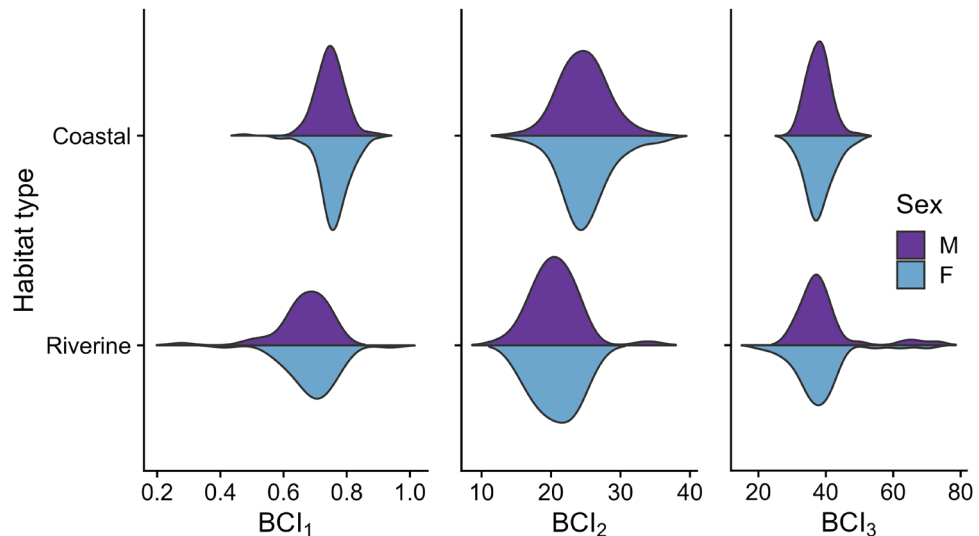


Figure 4. Violin plots showing the distribution of the three body condition indices: BCI_1 (UG/SL^{b1}), BCI_2 (W/SL^{b2}), and BCI_3 ($W/[SL \times UG^{b3}]$) obtained from wild Antillean manatees ($n = 362$) in two habitat types. The horizontal axis of each violin represents the value of the obtained BCI. The shape of the violin plot depicts the distribution of the values of the BCI in each location and for each sex. UG = umbilical girth, W = weight, SL = straight body length.

Parameter	Mean	SE	t value	Pr(> t)
BCI_1 (Thin C1,2–Ideal C3)	−0.059	0.023	−2.530	0.0118*
BCI_1 (Obese C4,5–Ideal C3)	0.041	0.015	2.703	0.0072**
BCI_2 (Thin C1,2–Ideal C3)	−5.658	1.393	−4.062	<0.0001***
BCI_2 (Obese C4,5–Ideal C3)	1.047	0.748	1.399	0.1632
BCI_3 (Thin C1,2–Ideal C3)	−4.425	1.460	−3.031	0.0027**
BCI_3 (Obese C4,5–Ideal C3)	−1.167	0.795	−1.468	0.1434

Table 4. BCI and b values fitted to wild Antillean manatees with non-linear robust regression. (* = $p < 0.05$; ** = $p < 0.005$; *** = $p < 0.0005$).

influence, and has the potential to be sensitive to the detection of obese or malnourished animals. Comparisons of BCI_1 among locations indicated differences in body condition between manatees living in freshwater ecosystems to those inhabiting coastal and marine areas, reinforcing that the subspecies *Trichechus manatus manatus* is likely comprised of, at least, two different ecotypes.

We compiled data collected by many researchers from thousands of hours of effort devoted to rescuing and studying Antillean manatees along a large distributional range and over decades. Our resulting database is to date the most comprehensive database of biometric information for the subspecies. Since most live manatee captures were conducted to equip the animals with remote monitoring telemetry tags, adult individuals were targeted and the proportion of calves is relatively small in our database (18%). However, the three BCIs met the important assumptions of lacking a correlation with standard length indicating that all of them may be suitable for all life stages.

For our analyses, we discarded manatees considered abnormal according to the in situ visual body condition assessment performed by the expert in charge (*i.e.*, C1, C2, C4, and C5 categories), and excluded females in the third trimester of pregnancy and one female from Brazil that was atypically large. This tool can aid in possibly determining pregnancy during late-stage development as the subject's values may be an outlier to the expected range, but as already noted, the BCI for thin, obese, or pregnant manatees was generally within the normal range, so caution is warranted for using this calculation alone without other supporting evidence.

Florida manatees are generally larger than Antillean manatees as has been already reported^{27,30,37}, with Florida manatees reaching a length of 376 cm and weighing up to 1620 kg³⁸, and Antillean manatees reaching a maximum of 330 cm in length and 550 kg of weight (this study). Manatees with greater surface-area-to-volume ratio—*i.e.*, smaller in size and volume—would be more susceptible to develop cold stress syndrome, suggesting that cold winter water temperatures in Florida may have been an important selection factor for the larger body shape and size of the Florida subspecies³⁹. Therefore, in response to conditions found in Florida, natural selection has not only increased the body size of Florida manatees, but also altered its body shape in relation to Antillean manatees⁴⁰ with an overall proportionately larger girth. This supports Bergmann's rule, which states

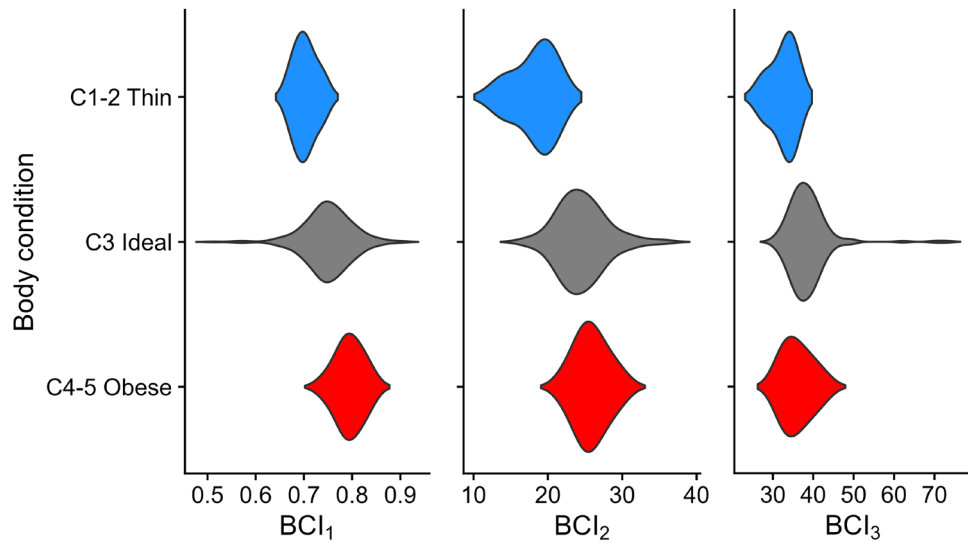


Figure 5. Violin plots showing the distribution of the three body condition indices: BCI_1 (UG/SL^{b1}), BCI_2 (W/SL^{b2}), and BCI_3 ($W/[SL \times UG^{b3}]$) obtained from wild Antillean manatees ($n = 362$) that were classified in the field as thin (C1 or C2; $n = 5$), ideal body condition (C3; $n = 287$), or obese (C4 or C5; $n = 13$). The horizontal axis of each violin represents the value of the obtained BCI. The shape of the violin plot depicts the distribution of the values of the BCI of each body type classification. UG = umbilical girth, W = weight, SL = straight body length.

	Females					N	B	Males		
	N	b	BCI					Mean	SD	Range
			Mean	SD	Range					
Antillean manatee (<i>T. m. manatus</i>)⁺—Coastal marine										
$BCI_1 = UG/SL^{b1}$	127	0.926	0.76	0.05	0.58–0.90	136	0.846	0.75	0.05	0.47–0.90
$BCI_2 = W/SL^{b2}$	70	2.626	25.0	3.75	14.8–36.2	83	2.561	24.7	3.30	15.0–34.6
$BCI_3 = W/(SL \times UG^{b3})$	69	1.888	38.2	4.14	29.1–49.3	79	1.883	37.8	3.27	31.0–49.2
Antillean manatee (<i>T. m. manatus</i>)⁺—Riverine										
$BCI_1 = UG/SL^{b1}$	47	0.934	0.69	0.08	0.41–0.94	43	0.854	0.66	0.09	0.28–0.78
$BCI_2 = W/SL^{b2}$	42	2.904	20.8	3.06	15.0–26.7	39	2.839	20.6	3.42	12.7–34.0
$BCI_3 = W/(SL \times UG^{b3})$	40	2.001	38.2	8.66	20.9–70.1	37	1.996	39.5	9.40	29.6–73.1
Florida manatee (<i>T. m. latirostris</i>)^{**}										
$BCI_1 = UG/SL^{b1}$	63	1.045	0.72	0.04	0.64–0.84	83	0.844	0.86	0.04	0.79–0.97
$BCI_2 = W/SL^{b2}$	63	2.915	23.2	2.4	18.9–29.6	83	2.578	29.8	2.4	24.6–37.3
$BCI_3 = W/(SL \times UG^{b3})$	63	1.815	42.9	2.7	36.6–57.0	83	1.835	40.6	1.8	36.1–44.7

Table 5. Body condition indices (BCI) for West Indian manatees *Trichechus manatus*. W = body mass, UG = umbilical girth, SL = straight-line total length. * This study, **Harshaw et al. 2016.

that body sizes of individuals of a species inhabiting cold regions tend to be larger than those living in warmer regions⁴¹. Here, we demonstrate the need for normal BCI ranges for Antillean manatees, and suggest that similarly unique ranges may be found for the Amazonian manatee *Trichechus inunguis* and African manatee *T. senegalensis*. Since round trip movements by Florida manatees between the United States and Cuba have been already documented^{42–44}, it would be interesting to explore body condition indices of Antillean manatees captured in the north of Cuba.

Our results show that the three BCIs fit well, and provide a solid base for estimating body condition for Antillean manatees. However, we gathered a significantly larger sample for BCI_1 (UG/SL) because it does not depend on obtaining animal weight, which is logistically difficult to collect in the field. Although body mass is often needed for some energy related studies⁴⁵, for some species this parameter may not always be easy to obtain during specific life-history stages or under particular conditions⁴⁶. In many cases, manatee researchers in the field do not have the required equipment or logistic capacity to weigh manatees; and the volume of the individual is estimated by the circumference at the umbilical region. The best fit to weight was BCI_3 , which was also insensitive to Habitat, Sex, and body condition (obesity) and can be used to estimate weight when SL and UG are available. These two measurements are easily obtained during manatee handling. Remote body condition

		Riverine		Coastal marine			
		Colombia	Mexico G	Belize	Brazil	Cuba	Mexico C
Riverine	Mexico G	1					
Coastal	Belize	<0.0001	<0.0001				
	Brazil	0.0359	0.0046	1			
	Cuba	0.0023	0.0012	1	1		
	Mexico C	0.0003	0.0018	1	1	1	
	Puerto Rico	<0.0001	<0.0001	1	1	1	1

Table 6. Pairwise comparisons among localities for BCI_1 using Wilcoxon rank sum test with Bonferroni continuity correction.

estimates can even be obtained through aerial photogrammetry, since SL can be measured directly, and UG can be calculated from the animal's width^{22,47}.

The weight of Antillean manatees can be estimated by using the following allometric equation:

$$W = BCI_3 \times SL \times UG^{b3} \quad (9)$$

where W is the weight in kilograms, SL the straight-line total length in meters, and UG is the circumference at the level of the umbilical scar in meters, or:

$$W = 37.67 \times SL \times UG^{1.893} \quad (10)$$

for an average manatee across all Habitat and both Sexes. Values from Table 3 can be substituted for individuals of known Habitat and Sex, but BCI_3 was relatively insensitive to these factors, and the only significant deviation from the mean was found for thin individuals.

Female Antillean manatees in this data set indicated a slightly smaller (non-significant) BCI_1 than males, which was opposite to that found in Florida manatees²² but similar to dugongs⁴⁸. The average female weight was slightly more than the average male weight (252 vs. 246 kg), and although these data do not constitute a random sample of all weight classes, they do follow the commonly observed pattern that *Trichechus manatus* sexual dimorphism is biased towards a larger body size in females. In aquatic mammals, a large body size may be an advantage in regard to defending against predators⁴⁹, to store more oxygen and hence improve dive or apnea capacity⁵⁰, to limit heat loss in the aquatic environment since large-bodied species have smaller surface-to-volume ratio⁴¹, and in the case of sirenians, a large body could also be attributed to their herbivorous diet⁵¹. According to a recent review⁵², sexual dimorphism appears to be a side effect of an adaptive increase in the body size of the species, and very often is linked to a polygyny reproduction system. In mammals, males are typically larger than females which is commonly associated with intra-sexual male competition⁵². Factors underlying the evolution of reversed sexual size dimorphism are poorly understood⁵³, but it is possible that a larger female size in manatees has been selected to better resist male harassment in their polygyny reproduction behavior. Also, adult female manatees generally show less traveling⁵⁴ and lower movement rates than males⁵⁵, likely allowing them to accumulate more lipid storage necessary to support gestation and lactation periods.

Post-hoc tests applied to BCI_1 identified strong similarities between manatees from Colombia and Mexico G, but these two localities were statistically different from the other five locations (Table 6, Fig. 6). Manatees captured in Colombia and Mexico G inhabit predominantly freshwater environments consisting of complex systems of rivers, floodplains, and lagoons with a clear seasonal flood-pulse^{56–58}. Individual manatees captured in the other localities (Puerto Rico, Cuba, Mexico C, Belize, and Brazil) occupy mostly coastal marine and estuarine environments, although they commonly make repeated trips to freshwater rivers to drink^{59–61}.

Habitat selection by Antillean manatees is strongly related to the availability of food, freshwater, and shelter, factors that vary differently depending on the environment they inhabit. Freshwater availability partially depends on the rainfall variation and appears to be the main factor influencing the movements of Antillean manatees living in coastal marine environments^{60,62}. In contrast, manatees living in flood-pulse river ecosystems travel in response to the water level fluctuation^{63–65}. During the low-water seasons, feeding resources for riverine manatees drop dramatically, and may force manatees to undergo periods of relative fasting in lagoons that become isolated during this period⁶⁶. Thus, manatees living in areas such as the Usumacinta (Mexico G) and Magdalena (Colombia) river basins may have intermittent restrictions to food access during the year which can eventually negatively affect their overall body condition. Seasonal environmental stimuli may elicit endocrine responses of the organism: the increase of the ghrelin hormone during fasting or reduced nutrient intake stimulates the release of growth hormone, and inhibits lipids storage and gain in body weight⁶⁷. For example, Florida manatees tend to show a reduced growth hormone, greater insulin-like growth factor hormone and greater fat thickness during short photoperiods (winter season)⁶⁸.

Another important factor influencing manatee body condition is the nutritional value of their diet. Manatees in coastal marine environments consume primarily seagrasses, algae, and in smaller proportions, mangrove and other vascular plants^{69–73} with no evidence of seasonality in dietary composition⁶⁹. In rivers, manatee diet includes a larger variety of plant species⁷⁴, with a higher proportion of terrestrial plant consumption, and a clear seasonality in diet composition⁷⁵. Previous research indicates that seasonal limitations in plant growth leads to

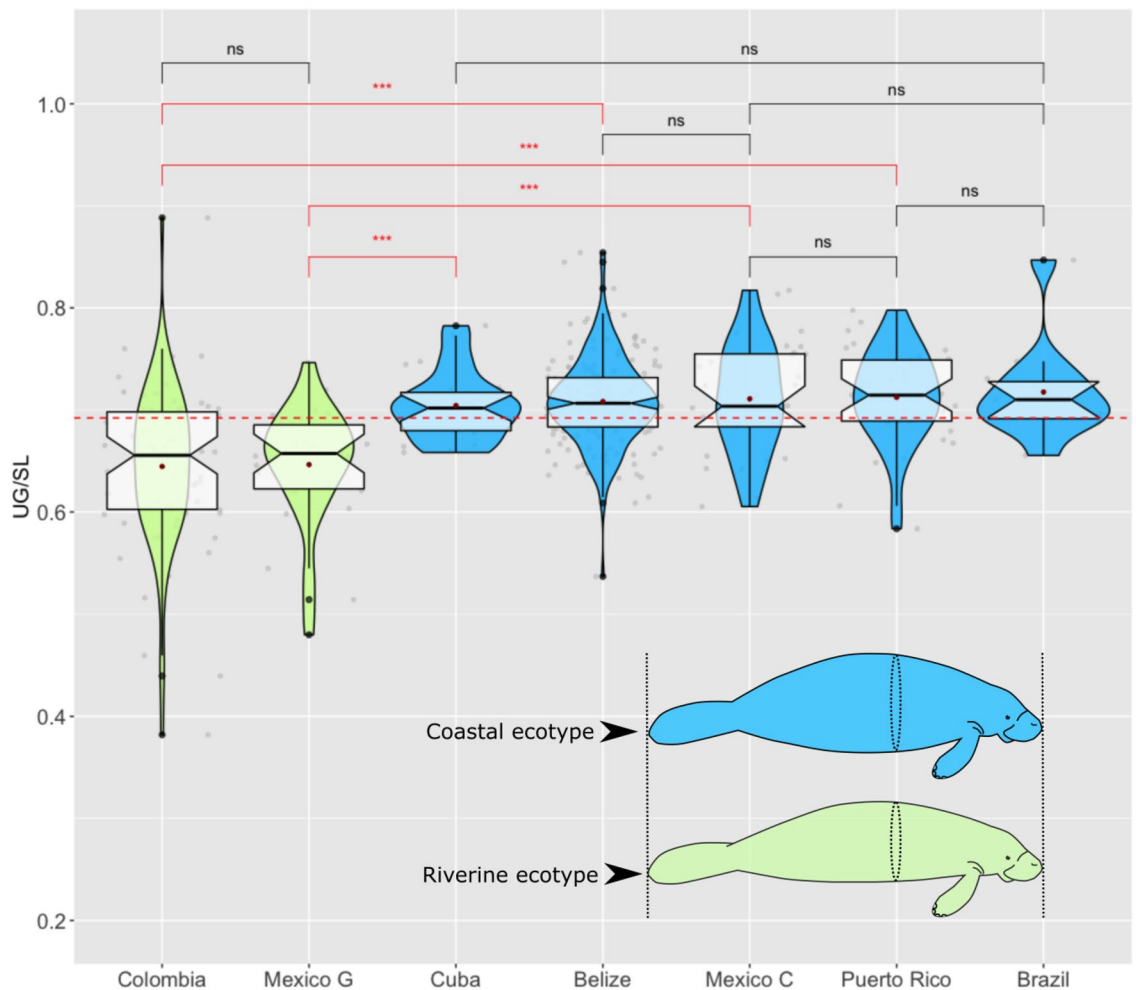


Figure 6. Violin plots showing significant differences in body condition ($BCI_1 = UG/SL$) among Antillean manatees captured in two different environments: floodplain riverine systems (green) and coastal areas (blue). The red dotted line indicates the global mean of the BCI value ($n = 362$). Breaks represent examples of some *post-hoc* pairwise comparisons (Significance codes: *** = $p < 0.0001$, ns = no significant).

altered nutritional composition of aquatic plants⁷⁶, a condition that can occur in riverine systems during the dry season and may affect the overall fitness of individuals. West Indian manatees have a slow digestive passage rate^{77–79}, efficient decomposition of fibrous material through microbial degradations⁷⁹, and high digestive efficiency⁸⁰. According to a recent study, low-fiber manatee diets may be more digestible because they have less lignin content⁸¹. Thus, since marine angiosperms have low lignin values when compared with terrestrial angiosperms⁷⁶, it can be expected a greater digestibility in manatees living in coastal marine environments when compared to manatees that feed on terrestrial or freshwater aquatic plants. More detailed stable isotopic studies on tissues could shed more light on the specific use of varying habitats among manatee populations^{71,75,82,83}. Details on the variation in the bioenergetics of the subspecies according to their diets are needed to elucidate the physiological implications of their digestion.

Our results open an interesting discussion about the phenotypic plasticity of the subspecies and suggest that a single genotype may have originated at least two alternative forms⁸⁴ with differing behavior (*e.g.*, habitat use) and morphology (*e.g.*, robustness) in response to differences in environmental conditions. More information on genotypic variation, habitat use and feeding habitats would be informative to support this hypothesis. The two ecotypes—riverine and coastal Antillean manatees—may face different fitness tradeoffs relative to environmental and resource limitations, influencing ultimately the calculated BCIs.

The overall health assessment during an examination of a manatee consists of several factors and tools in order to completely determine the condition of the population by assessing a few individuals⁸⁵. The BCI is one of the tools in the arsenal, but does not provide a complete picture of the health status of the animal nor concrete evidence of its condition, thus other ancillary information should be collected. Blood work is critical, and customary tissues should be collected and properly archived in the event that additional studies may be required. Researchers typically assume that body condition index is a proxy of lipid content, which in turn is supposed to be positively and directly related to fitness or some component of fitness⁸⁶. However, this is not always the case,

and caution should be taken to not over interpret the usefulness of BCIs for manatees. Nevertheless, to carry this further, using BCI can inform researchers of the nutritional status of the manatees handled in the future.

Biometric body condition indices are often considered composite metrics of nutritional physiology, physical status, and health⁸⁶, allowing the integration of ecologically relevant aspects⁸⁷. In the long term, body condition of wild manatees can be a valuable parameter to evaluate the impact of several environmental stressors⁸⁸, and to advise management strategies⁸⁹. For example, BCIs can be used to assess the impact of stress level as a response to changes in manatees' habitat that disrupt access to food and/or freshwater, and exposure to contamination and other persistent human-related disturbances. This will ultimately serve to inform development of sound management plans and guide regional based efforts to help conserve the subspecies.

Received: 13 April 2021; Accepted: 8 September 2021

Published online: 30 September 2021

References

1. Wasser, S. K. *et al.* Population growth is limited by nutritional impacts on pregnancy success in endangered Southern resident killer whales (*Orcinus orca*). *PLoS ONE* **12**, e0179824. <https://doi.org/10.1371/journal.pone.0179824> (2017).
2. Hoare, J. *et al.* Conservation implications of a long-term decline in body condition of the Brothers Island tuatara (*Sphenodon guntheri*). *Anim. Conserv.* **9**, 456–462 (2006).
3. Castrillon, J. & Bengtson Nash, S. Evaluating cetacean body condition; a review of traditional approaches and new developments. *Ecol. Evol.* (2020).
4. Peig, J. & Green, A. J. New perspectives for estimating body condition from mass/length data: the scaled mass index as an alternative method. *Oikos* **118**, 1883–1891 (2009).
5. Labrada-Martagón, V., Méndez-Rodríguez, L. C., Gardner, S. C., Cruz-Escalona, V. H. & Zenteno-Savín, T. Health indices of the green turtle (*Chelonia mydas*) along the Pacific coast of Baja California Sur, Mexico. II. Body condition index. *Chelonian Conserv. Biol.* **9**, 173–183 (2010).
6. Weber, L., Higgins, P., Carlson, R. & Janz, D. Development and validation of methods for measuring multiple biochemical indices of condition in juvenile fishes. *J. Fish Biol.* **63**, 637–658 (2003).
7. Fokidis, H. B., Hurley, L., Rogowski, C., Sweazea, K. & Deviche, P. Effects of captivity and body condition on plasma corticosterone, locomotor behavior, and plasma metabolites in curve-billed thrashers. *Physiol. Biochem. Zool.* **84**, 595–606 (2011).
8. Labocha, M. K. & Hayes, J. P. Morphometric indices of body condition in birds: a review. *J. Ornithol.* **153**, 1–22. <https://doi.org/10.1007/s10336-011-0706-1> (2012).
9. Labocha, M. K., Schutz, H. & Hayes, J. P. Which body condition index is best?. *Oikos* **123**, 111–119. <https://doi.org/10.1111/j.1600-0706.2013.00755.x> (2014).
10. Bonnet, X. & Naulleau, G. Estimation of body reserves in living snakes using a Body Condition Index (BCI). *Scientia Herpetologica* **3**, 237 (1995).
11. Lubbe, A., Underhill, L., Waller, L. & Veen, J. A condition index for African penguin *Spheniscus demersus* chicks. *Afr. J. Mar. Sci.* **36**, 143–154 (2014).
12. Santoro, M. *et al.* Parasitic infection by larval helminths in Antarctic fishes: pathological changes and impact on the host body condition index. *Dis. Aquat. Org.* **105**, 139–148 (2013).
13. Rossi, S. *et al.* Monitoring green sea turtles in Brazilian feeding areas: relating body condition index to fibropapillomatosis prevalence. *J. Mar. Biol. Assoc. U.K.* **99**, 1879–1887 (2019).
14. Mubiana, V. K., Vercauteren, K. & Blust, R. The influence of body size, condition index and tidal exposure on the variability in metal bioaccumulation in *Mytilus edulis*. *Environ. Pollut.* **144**, 272–279 (2006).
15. Lippold, A. *et al.* Temporal trends of persistent organic pollutants in Barents Sea Polar bears (*Ursus maritimus*) in relation to changes in feeding habits and body condition. *Environ. Sci. Technol.* **53**, 984–995 (2018).
16. Delciellos, A. C. *et al.* Habitat fragmentation affects individual condition: evidence from small mammals of the Brazilian Atlantic Forest. *J. Mammal.* **99**, 936–945 (2018).
17. Burgess, E. A., Brown, J. L. & Lanyon, J. M. Sex, scarring, and stress: understanding seasonal costs in a cryptic marine mammal. *Conserv. Physiol.* **1**, <https://doi.org/10.1093/conphys/cot014> (2013).
18. McKinney, M. A. *et al.* Validation of adipose lipid content as a body condition index for polar bears. *Ecol. Evol.* **4**, 516–527 (2014).
19. Noren, S. R. *et al.* Identifying a reliable blubber measurement site to assess body condition in a marine mammal with topographically variable blubber, the Pacific walrus. *Mar. Mamm. Sci.* **31**, 658–676 (2015).
20. Arnould, J. P. Indices of body condition and body composition in female Antarctic fur seals (*Arctocephalus gazella*). *Mar. Mamm. Sci.* **11**, 301–313 (1995).
21. Pitcher, K., Calkins, D. & Pendleton, G. Steller sea lion body condition indices. *Mar. Mamm. Sci.* **16**, 427–436 (2000).
22. Harshaw, L. T., Larkin, I. V., Bonde, R. K., Deutsch, C. J. & Hill, R. C. Morphometric body condition indices of wild Florida manatees (*Trichechus manatus latirostris*). *Aquat. Mamm.* **42**, 428 (2016).
23. Castelblanco-Martínez, D. N., Nourisson, C., Quintana-Rizzo, E., Padilla-Saldivar, J. A. & Schmitter-Soto, J. J. Potential effects of human pressure and habitat fragmentation on population viability of the Antillean manatee *Trichechus manatus manatus*: a predictive model. *Endanger. Spec. Res.* **18**, 129–145. <https://doi.org/10.3354/esr00439> (2012).
24. IUCN. The IUCN Red List of Threatened Species. Version 2020–2. <https://www.iucnredlist.org>. Downloaded on 09 Dec 2020. (2020).
25. Quintana-Rizzo, E. & Reynolds III, J. E. Regional management plan for the West Indian manatee. 178 (United Nations Environment Programme. United Nations Environment Programme. CEP Technical Report, Kingston, Jamaica, 2008).
26. Morrison, M. L. The habitat sampling and analysis paradigm has limited value in animal conservation: a prequel. *J. Wildl. Manag.* **76**, 438–450 (2012).
27. Wong, A. W. *et al.* Monitoring oral temperature, heart rate, and respiration rate of West Indian manatees (*Trichechus manatus*) during capture and handling in the field. *Aquat. Mamm.* **38**, 1–16. <https://doi.org/10.1578/AM.38.1.2012.1> (2012).
28. Castelblanco-Martínez, D. N., Morales-Vela, B. & Padilla-Saldivar, J. A. Using craniometrical predictors to infer body size of Antillean manatees. *Mammalia* **78**, 109–115 (2014).
29. QGIS.org. QGIS Geographic Information System. QGIS Association. <http://www.qgis.org>. (2021).
30. Bonde, R. K. *et al.* Biomedical health assessments of the Florida manatee in Crystal River - providing opportunities for training during the capture, handling, and processing of this endangered aquatic mammal. *J. Mar. Anim. Ecol.* **5** (2012).
31. Mignucci-Giannoni, A. A. *et al.* Manatee mortality in Puerto Rico. *Environ. Manage.* **25**, 189–198 (2000).
32. Susanti, Y., Pratiwi, H., Sulistijowati H., S., & Liana, T. M estimation, S estimation, and MM estimation in robust regression. *Int. J. Pure Appl. Math.* **91**, 349–360 (2014).
33. R Core Team. R: A language and environment for statistical computing: version 3.6.0. URL: <https://www.R-project.org> (2019).

34. Maechler, M. *et al.* robustbase: Basic robust statistics. *R package version 0.4–3*, <http://CRAN.R-project.org/package=robustbase> (2021).
35. Koller, M. & Stahel, W. A. Nonsingular subsampling for regression S estimators with categorical predictors. *Comput. Stat.* **32**, 631–646 (2017).
36. Wickham, H. *ggplot2-Elegant Graphics for Data Analysis* (Springer International Publishing, Cham, 2016).
37. Converse, L. J., Fernandes, P. J., Macwilliams, P. S. & Bossart, G. D. Hematology, serum chemistry, and morphometric reference values for Antillean Manatees (*Trichechus manatus manatus*). *J. Zoo Wildl. Med.* **25**, 423–431 (1994).
38. O’Shea, T. J. & Reep, R. L. Encephalization quotients and life-history traits in the Sirenia. *J. Mammal.* **71**, 534–543 (1990).
39. Chirachevin, P. *The relationship between cold stress syndrome mortality and body shape in Florida manatees*. Undergraduate thesis, Andrews University (2017).
40. Johnson, J. *Is natural selection shaping Florida manatees? An investigation into the body shapes between the subspecies of the West Indian manatee*. Undergraduate thesis, Andrews University, (2019).
41. Torres-Romero, E. J., Morales-Castilla, I. & Olalla-Tárraga, M. Á. Bergmann’s rule in the oceans? Temperature strongly correlates with global interspecific patterns of body size in marine mammals. *Global Ecol. Biogeogr.* **25**, 1206–1215 (2016).
42. Alvarez-Alemán, A., Beck, C. A. & Powell, J. A. First report of a Florida manatee (*Trichechus manatus latirostris*) in Cuba. *Aquat. Mamm.* **36**, 148–153. <https://doi.org/10.1578/AM.36.2.2010.148> (2010).
43. Alvarez-Alemán, A., Austin, J. D., Jacoby, C. A. & Frazer, T. K. Cuban connection: regional role for Florida’s manatees. *Front. Mar. Sci.* **5**, 294 (2018).
44. Rood, K., Teague, A., Barton, S., Alvarez-Alemán, A. & Hieb, E. First documentation of return movement from Cuba to the continental United States by a Florida manatee. *Sirenews* **71**, 24–25 (2020).
45. Konishi, K. Characteristics of blubber distribution and body condition indicators for Antarctic minke whales (*Balaenoptera bonaerensis*). *Mamm. Study* **31**, 15–22 (2006).
46. Viblanc, V. A. *et al.* Body girth as an alternative to body mass for establishing condition indexes in field studies: a validation in the king penguin. *Physiol. Biochem. Zool.* **85**, 533–542 (2012).
47. Ramos, E. A., Landeo-Yauri, S., Castelblanco-Martínez, N., Quade, A. & Rieucan, G. Drone-based photogrammetry assessments of body size and body condition of Antillean manatees. *Mamm. Biol.* (In prep.).
48. Lanyon, J. M., Sneath, H. L., Long, T. & Bonde, R. K. Physiological response of wild dugongs (*Dugong dugon*) to out-of-water sampling for health assessment. *Aquat. Mamm.* **36**, 46–58 (2010).
49. Baker, J., Meade, A., Pagel, M. & Venditti, C. Adaptive evolution toward larger size in mammals. *Proc. Natl. Acad. Sci.* **112**, 5093–5098 (2015).
50. Noren, S. R. & Williams, T. M. Body size and skeletal muscle myoglobin of cetaceans: adaptations for maximizing dive duration. *Comp. Biochem. Physiol., A: Mol. Integr. Physiol.* **126**, 181–191, [https://doi.org/10.1016/S1095-6433\(00\)00182-3](https://doi.org/10.1016/S1095-6433(00)00182-3) (2000).
51. Sibly, R. M. & Brown, J. H. Effects of body size and lifestyle on evolution of mammal life histories. *Proc. Natl. Acad. Sci.* **104**, 17707–17712 (2007).
52. Cassini, M. H. A mixed model of the evolution of polygyny and sexual size dimorphism in mammals. *Mammal Rev.* **50**, 112–120 (2020).
53. Fokidis, H. B., Risch, T. S. & Glenn, T. C. Reproductive and resource benefits to large female body size in a mammal with female-biased sexual size dimorphism. *Anim. Behav.* **73**, 479–488 (2007).
54. Deutsch, C. J. *et al.* Seasonal movements, migratory behavior and site fidelity of West Indian manatees along the Atlantic Coast of the United States. *Wildl. Monogr.* **151**, 1–77 (2003).
55. Flamm, R. O., Weigle, B. L., Wright, I. E., Ross, M. & Aglietti, S. Estimation of manatee (*Trichechus manatus latirostris*) places and movement corridors using telemetry data. *Ecol. Appl.* **15**, 1415–1426 (2005).
56. Puc-Carrasco, G., Morales-Vela, B., Olivera-Gomez, L. D. & González-Solis, D. First field-based estimate of Antillean manatee abundance in the San Pedro River system suggests large errors in current estimates for Mexico. *Cienc. Mar.* **43**, 285–299 (2017).
57. Puc-Carrasco, G., Olivera-Gómez, L. D., Arriaga-Hernández, S. & Jiménez-Domínguez, D. Relative abundance of Antillean manatees in the Pantanos de Centla Biosphere Reserve in the coastal plain of Tabasco Mexico. *Cienc. Mar.* **42**, 261–270 (2016).
58. Castelblanco-Martínez, D. N., Kendall, S., Orozco, D. L. & Arévalo-González, K. La conservación de los manatíes (*Trichechus inunguis* y *Trichechus manatus*) en áreas no protegidas de Colombia in *Conservación de grandes vertebrados en áreas no protegidas de Colombia*, (eds Payán, E. *et al.*) 81–98 (Instituto de Investigación de Recursos Biológicos Alexander von Humboldt, 2015).
59. Castelblanco-Martínez, D. N. *et al.* Movement patterns of Antillean manatees in Chetumal Bay (Mexico) and coastal Belize: A challenge for regional conservation. *Mar. Mamm. Sci.* **29**, 166–182. <https://doi.org/10.1111/j.1748-7692.2012.00602.x> (2013).
60. Corona-Figueroa, M. *et al.* Searching for manatees in the dark waters of a transboundary river between Mexico and Belize: a predictive distribution model. *Aquat. Ecol.*, 1–16 (2020).
61. Alvarez-Alemán, A., Angulo-Valdés, J. A., Alfonso, E. G., Powell, J. A. & Taylor, C. R. Occurrence of the Endangered Antillean manatee *Trichechus manatus manatus* in a marine protected area, Isla de la Juventud, Cuba. *Oryx* **51**, 324–331 (2017).
62. Castelblanco-Martínez, D. N., dos Reis, V. & de Thoisy, B. How to detect an elusive aquatic mammal in complex environments? A study of the Endangered Antillean manatee *Trichechus manatus manatus* in French Guiana. *Oryx* **52**, 382–392. <https://doi.org/10.1017/S0030605316000922> (2017).
63. Castelblanco-Martínez, D. N., Holguín, V. E. & Zapata, M. Conservación y manejo del manatí en la Ciénaga de Paredes (Santander). In *Programa Nacional de manejo y conservación de manatíes en Colombia*, (eds Caicedo, D. *et al.*) 105–113 (Ministerio de Ambiente, Vivienda y Desarrollo Territorial - Fundación Omacha, 2005).
64. Gonzalez-Socoloske, D. & Olivera-Gomez, L. Food choice by a free-ranging Antillean manatee (*Trichechus manatus manatus*) in Tabasco, Mexico. *J. Mar. Anim. Ecol.* **11**, 19–32 (2019).
65. Jimenez-Dominguez & Olivera Gómez, L. D. Características del hábitat del manatí antillano (*Trichechus manatus manatus*) en sistemas fluvio-lagunares del sur del Golfo de México. *Therya* **5**, 601–6014 (2014).
66. Best, R. C. Apparent dry-season fasting in Amazonian manatees (Mammalia, Sirenia). *Biotropica* **15**, 61–64 (1983).
67. Florant, G. L. & Healy, J. E. The regulation of food intake in mammalian hibernators: a review. *J. Comp. Physiol., B* **182**, 451–467 (2012).
68. Tighe, R. L., Bonde, R. K. & Avery, J. P. Seasonal response of ghrelin, growth hormone, and insulin-like growth factor I in the free-ranging Florida manatee (*Trichechus manatus latirostris*). *Mamm. Biol.* **81**, 247–254. <https://doi.org/10.1016/j.mambio.2016.02.006> (2016).
69. Castelblanco-Martínez, D. N., Morales-Vela, B., Hernández-Arana, H. A. & Padilla-Saldívar, J. Diet of the manatees *Trichechus manatus manatus* in Chetumal Bay, Mexico. *Latin Am. J. Aquat. Mammals* **7**, 39–46 (2009).
70. Allen, A. C., Beck, C. A., Bonde, R. K., Powell, J. A. & Gomez, N. A. Diet of the Antillean manatee (*Trichechus manatus manatus*) in Belize, Central America. *J. Mar. Biol. Assoc. U.K.*, 1–10 (2017).
71. Garcés-Cuatas, N. *Ecología trófica del manatí del Caribe: una herramienta de conservación para ecosistemas estratégicos en el Caribe mexicano* Ph.D. thesis, Universidad de Quintana Roo, (2020).
72. Rodrigues, F. M. *et al.* Nutritional composition of food items consumed by Antillean manatees (*Trichechus manatus manatus*) along the coast of Paraíba Northeastern Brazil. *Aquat. Bot.* **168**, 103324. <https://doi.org/10.1016/j.aquabot.2020.103324> (2021).
73. Navarro-Martínez, Z., Alvarez-Alemán, A. & Castelblanco-Martínez, D. N. Diet components in three manatees in Cuba. *Rev. Invest. Mar.* **34**, 1–11 (2014).

74. Ponce-García, G., Olivera-Gómez, L. D. & Solano, E. Analysis of the plant composition of manatee (*Trichechus manatus manatus*) faeces in a lake in south-eastern Mexico. *Aquat. Conserv. Mar. Freshwat. Ecosyst.* (2017).
75. Pablo-Rodríguez, N., Olivera-Gómez, L. D., Aurióles-Gamboa, D. & Vega-Cendejas, M. E. Seasonal differences in the feeding habits of the Antillean manatee population (*Trichechus manatus manatus*) in the fluvial-lagoon systems of Tabasco Mexico. *Mar. Mamm. Sci.* **32**, 363–375 (2016).
76. Siegal-Willott, J. L. *et al.* Proximate nutrient analyses of four species of submerged aquatic vegetation consumed by Florida manatee (*Trichechus manatus latirostris*) compared to romaine lettuce (*Lactuca sativa* var. *longifolia*). *J. Zoo Wildl. Med.* **41**, 594–602, <https://doi.org/10.1638/2009-0118.1> (2010).
77. Lomolino, M. V. & Ewel, K. C. Digestive efficiencies of the West Indian manatee (*Trichechus manatus*). *Fla. Sci.* **47**, 176–179 (1984).
78. Larkin, I. L. V., Fowler, V. F. & Reep, R. L. Digesta passage rates in the Florida manatee *Trichechus manatus latirostris*. *Zoo Biol.* **26**, 503–515 (2007).
79. Reynolds, J. E. III. & Rommel, S. A. Structure and function of the gastrointestinal tract of the Florida manatee *Trichechus manatus latirostris*. *Anat. Rec.* **245**, 539–558 (1996).
80. Arévalo-González, K. *Aspectos de la ecología y fisiología alimentaria del manatí antillano*. M.Sc. thesis, Universidad Veracruzana (2020).
81. Harshaw, L. T., Larkin, I. V., Staples, C. R., Scott, K. C. & Hill, R. C. *In vivo* apparent digestibility of fiber in Florida manatees (*Trichechus manatus latirostris*) under human care. *Aquat. Mamm.* **45**, 513–524 (2019).
82. Alves-Stanley, C. D. & Worthy, G. A. J. Carbon and nitrogen stable isotope turnover rates and diet-tissue discrimination in Florida manatees (*Trichechus manatus latirostris*). *J. Exp. Biol.* **212**, 2349–2355 (2009).
83. Alves-Stanley, C. D., Worthy, G. A. J. & Bonde, R. K. Feeding preferences of the West Indian manatee in Florida, Belize, and Puerto Rico as indicated by stable isotope analysis. *Mar. Ecol. Prog. Ser.* **402**, 255–267 (2010).
84. West-Eberhard, M. J. Phenotypic plasticity and the origins of diversity. *Annu. Rev. Ecol. Syst.* **20**, 249–278 (1989).
85. Stamper, M. A. & Bonde, R. Health assessment of captive and wild-caught West Indian manatees. In *Sirenian conservation: Issues and strategies in developing countries*, (eds Hines, E. *et al.*) (University Press of Florida, 2012).
86. Wilder, S. M., Raubenheimer, D. & Simpson, S. J. Moving beyond body condition indices as an estimate of fitness in ecological and evolutionary studies. *Funct. Ecol.* **30**, 108–115 (2016).
87. Santos, N. *et al.* Protein metabolism and physical fitness are physiological determinants of body condition in Southern European carnivores. *Sci. Rep.* **10**, 15755. <https://doi.org/10.1038/s41598-020-72761-6> (2020).
88. Mumby, H. S. *et al.* Stress and body condition are associated with climate and demography in Asian elephants. *Conserv. Physiol.* **3**, cov030 (2015).
89. Abujanra, F., Agostinho, A. & Hahn, N. Effects of the flood regime on the body condition of fish of different trophic guilds in the Upper Paraná River floodplain Brazil. *Braz. J. Biol.* **69**, 459–468 (2009).

Acknowledgements

Data from Cuba provided by U.S. Geological Survey (USGS) was acquired in accordance with U.S. Fish and Wildlife Service (USFWS) Federal Fish and Wildlife Permit (MA791721) issued to the USGS/Sirenian Project and comply with USGS IACUC standards. USGS data collection from Cuba was conducted in cooperation with the U.S. Navy, Naval Station Guantánamo Bay. Manatee captures and health assessments in Isla de la Juventud, Cuba were conducted under special permits issued by CICA (Centro de Inspección y Control Ambiental): 75/2012, LH112 AN (7), 50/2015, 32/2015, LHNA (99)/2015. Data from Puerto Rico was obtained in accordance with USFWS Federal Fish and Wildlife Permit (MA791721) issued to the USGS/Sirenian Project and PRDNER permit (216-EPE-034). Captures in Mexico were conducted under research permits issued by SGPA/DGVS: 03144, 04513, 03670/06, 03675/07 (Mexican Caribbean) and d0/06, 01103/07, 00263/08, 01754/09, 04675/10, 02901/11, 03562/12, 05846/13, 11519/13, 00808/14, 00646-16 (Gulf of Mexico). Manatees captures in Belize were conducted under permits issued by the Belize Department of Forestry: BZ-CD/60/3/07, BZ-CD/60/3/10, BZ-CD/60/3/11, BZ-CD/60/3/12, BZCD/60/3/13(15), BZ-CD/72/2/05, BZ-CD1945, WL/2/1/18 (28), and FD/WL/19 (20). Captures in Brazil were conducted under permits 25597-1 and 55433 issued by the ICMBio/SISBIO. The funding and in-kind support to conduct capture activities was provided by Wildlife Trust, Coastal Zone Authority and Institute, John D. and Catherine T. MacArthur Foundation, The Christopher Reynolds Foundation, The Eppley Foundation for Research, Mesoamerican Reef Fund, Bay and Paul Foundations, British High Commission, Conservation Leadership Program, Protected Areas Conservation Trust, the GEF-UNDP-CNAP, and Operation Wallacea (Cuba); Mesoamerican Reef Fund, Norwegian Cruise Line, and Wildlife Trust (Belize); Sea to Shore Alliance, Zoological Society of London, Harvest Caye Conservation Foundation, Disney Conservation Foundation, Columbus Zoo and Aquarium Conservation Fund, New England Bio-lab Foundation, National Geographic Society, Liz Claiborne Art Ortenberg Foundation, and Oak Hill (Cuba and Belize); SEMARNAT-CONACyT (Project 2002-C01-1128) and Dolphin Discovery (Mexican Caribbean); The Mohamed bin Zayed Species Conservation Fund (Gulf of Mexico); ICMBio/Costa dos Corais Protected Area (Brazil); Ministerio de Medio Ambiente y Desarrollo Sostenible, CVS, CARDIQUE, CORPAMAG, CODECHOCO, CORPOURABA, CARSUCRE, Alcaldías de Simití y Mahates (Bolívar), Yondó (Antioquia), Santa Ana (Magdalena), International Conservation Colombia, Fundación Alto Magdalena, UNEP, RAMSAR Convention, Barranquilla Zoo, and Unidad Administrativa Especial del Sistema de Parques Nacionales (Colombia). We are indebted to all the people and institutions involved in manatee captures for logistic and field support: Sylma M. Escobar, Carla I. Rivera (Caribbean Manatee Conservation Center, Puerto Rico); Eddy García, Lázaro García, Leandro Rodríguez and Jorge Angulo (Cuba); Daniel Robelo-Martínez, Rafael Estrada Anaya, Gerardo Rodríguez Martínez, Humberto Bahena Basave, and Roberto Sánchez Okrucky (Mexican Caribbean); Omacha Foundation staff (Colombia). Successful manatee captures would not be possible without the meaningful involvement of local communities in all the countries. Sylma M. Escobar, Carla I. Rivera, and Vanessa Méndez-Gallardo kindly illustrated figure 2. Last, we would like to extend our gratitude and respect to the late Drs. John Reynolds and Greg Bossart for their meaningful advice during the data collection. Any use of trade, firm, or product names is for descriptive purposes only and does not imply endorsement by the U.S. Government.

Author contributions

DNC-M, DHS, SSL-Y, EAR, and GR designed the work and performed the statistical analysis. DNC-M took the lead in writing the manuscript. EAR, SSL-Y, DHS, DNC-M, LJC-C and AAM-G prepared graphical material. DHS, AA-A, FLNA, CAB, RKB, SMB, DC-H, JG, IVG-C, DG-S, DJ-D, FOL, YM-S, JBM-V, LDO-G, JAP-S, JP, JPR, and AAM-G collected and provided biometric data of wild manatees. All authors helped to shape the research, provided critical feedback during data interpretation, and substantively revised the manuscript.

Competing interests

The authors declare no competing interests.

Additional information

Supplementary Information The online version contains supplementary material available at <https://doi.org/10.1038/s41598-021-98890-0>.

Correspondence and requests for materials should be addressed to D.N.C.-M.

Reprints and permissions information is available at www.nature.com/reprints.

Publisher's note Springer Nature remains neutral with regard to jurisdictional claims in published maps and institutional affiliations.



Open Access This article is licensed under a Creative Commons Attribution 4.0 International License, which permits use, sharing, adaptation, distribution and reproduction in any medium or format, as long as you give appropriate credit to the original author(s) and the source, provide a link to the Creative Commons licence, and indicate if changes were made. The images or other third party material in this article are included in the article's Creative Commons licence, unless indicated otherwise in a credit line to the material. If material is not included in the article's Creative Commons licence and your intended use is not permitted by statutory regulation or exceeds the permitted use, you will need to obtain permission directly from the copyright holder. To view a copy of this licence, visit <http://creativecommons.org/licenses/by/4.0/>.

© The Author(s) 2021

Terms and Conditions

Springer Nature journal content, brought to you courtesy of Springer Nature Customer Service Center GmbH (“Springer Nature”).

Springer Nature supports a reasonable amount of sharing of research papers by authors, subscribers and authorised users (“Users”), for small-scale personal, non-commercial use provided that all copyright, trade and service marks and other proprietary notices are maintained. By accessing, sharing, receiving or otherwise using the Springer Nature journal content you agree to these terms of use (“Terms”). For these purposes, Springer Nature considers academic use (by researchers and students) to be non-commercial.

These Terms are supplementary and will apply in addition to any applicable website terms and conditions, a relevant site licence or a personal subscription. These Terms will prevail over any conflict or ambiguity with regards to the relevant terms, a site licence or a personal subscription (to the extent of the conflict or ambiguity only). For Creative Commons-licensed articles, the terms of the Creative Commons license used will apply.

We collect and use personal data to provide access to the Springer Nature journal content. We may also use these personal data internally within ResearchGate and Springer Nature and as agreed share it, in an anonymised way, for purposes of tracking, analysis and reporting. We will not otherwise disclose your personal data outside the ResearchGate or the Springer Nature group of companies unless we have your permission as detailed in the Privacy Policy.

While Users may use the Springer Nature journal content for small scale, personal non-commercial use, it is important to note that Users may not:

1. use such content for the purpose of providing other users with access on a regular or large scale basis or as a means to circumvent access control;
2. use such content where to do so would be considered a criminal or statutory offence in any jurisdiction, or gives rise to civil liability, or is otherwise unlawful;
3. falsely or misleadingly imply or suggest endorsement, approval, sponsorship, or association unless explicitly agreed to by Springer Nature in writing;
4. use bots or other automated methods to access the content or redirect messages
5. override any security feature or exclusionary protocol; or
6. share the content in order to create substitute for Springer Nature products or services or a systematic database of Springer Nature journal content.

In line with the restriction against commercial use, Springer Nature does not permit the creation of a product or service that creates revenue, royalties, rent or income from our content or its inclusion as part of a paid for service or for other commercial gain. Springer Nature journal content cannot be used for inter-library loans and librarians may not upload Springer Nature journal content on a large scale into their, or any other, institutional repository.

These terms of use are reviewed regularly and may be amended at any time. Springer Nature is not obligated to publish any information or content on this website and may remove it or features or functionality at our sole discretion, at any time with or without notice. Springer Nature may revoke this licence to you at any time and remove access to any copies of the Springer Nature journal content which have been saved.

To the fullest extent permitted by law, Springer Nature makes no warranties, representations or guarantees to Users, either express or implied with respect to the Springer nature journal content and all parties disclaim and waive any implied warranties or warranties imposed by law, including merchantability or fitness for any particular purpose.

Please note that these rights do not automatically extend to content, data or other material published by Springer Nature that may be licensed from third parties.

If you would like to use or distribute our Springer Nature journal content to a wider audience or on a regular basis or in any other manner not expressly permitted by these Terms, please contact Springer Nature at

onlineservice@springernature.com